

20
19





A SPECIAL TANNING PROCESS MAKES SPR LEATHER 3 TIMES STRONGER AND 2 1/2 TIMES MORE ABRASION-RESISTANT THAN CONVENTIONAL LEATHER



TRIPLE TANNED

A combination of three different tannages are used to create a full-grain leather that is resistant to chemicals, alkali, acids and enzymes. Conventional leathers only use one tannage.

WATER RESISTANT

After being triple-tanned and dyed SPR™ leather is impregnated with a special formula of waxes and oils that are not soluble in water. This process makes SPR™ leather extremely high water-resistant. It can also withstand repeated wettings and forced dryings (on a heat duct or radiator) without shrinking, cracking or losing its rich oily feel.

SWEAT RESISTANT

Independent laboratory test confirm that SPR™ leather will not shrink or lose its shape, even after extended exposure to perspiration.

3 TIMES STRONGER

The combination of triple tanning and oil impregnation make SPR™ leather 3 times stronger than comparable leathers.

2 1/2 TIMES MORE ABRASION RESISTANT

Laboratory tested found SPR™ leather to be 2 1/2 times longer lasting than conventional leather.

BARNYARD PROOF

In every test performed, SPR™ leather proved to have remarkable resistance to or no ill effects from the most severe chemicals found in any workplace, including organic and inorganic acids, alkali, chemicals, urea, lactic acid, manure, salt and enzymes normally associated with farm or ranch environments.

SPR™ is a registered trademark of Georgia Boot®

TEST METHOD	TEST PROCEDURE	TEST STANDARD	TEST RESULT
Pre-treatment with contaminants followed By SATRA TM25	1. Cut two pieces (at least 300mm x 300mm) of SPR leather. Lightly abrade surface (section at least 200mm x 200mm) with 180 grit paper to simulate some wear.	No more than slight cracking or other damage	A: After Oleic Acid Dry: No crack/creasing Wet: No crack/creasing
	2. One sample treated with pure oleic acid, the other with a synthetic urine solution. Contaminants should be left on for 5 days (120 hours).		B: After Synthetic Urine Dry: No crack/creasing Wet: No crack/creasing
	3. Remove liquid contaminants, wipe and dry leather. Cut four vamp flex test samples (each 64mm square) from the center part of each above contaminated leather. Two of the samples (one 'along' and one 'across') flexed for 500,000 flexes dry and two (one 'along' and one 'across') flexed for 100,000 flexes wet.		
	4. Check the surface for any creasing, cracking, delamination or other degradation after vamp flex.		

GEORGIA BOOT MARSHLAND

- Full-grain SPR™ leather upper
- Waterproof rubber shell
- Vulcanized rubber construction
- Mesh lining with cooling fibers
- AMP LT insole with memory foam
- Oil and slip-resistant rubber outsole

UNISEX SIZES M 4-14
Whole sizes only. Order based on Men's sizing. 1/2 sizes should order down.

- Slip-Resistance, Wet/Dry ●●●●
- Slip-Resistance, Wet/Oily ●●●●
- Oil-Resistance ●●●●
- Chemical-Resistance ●●●●

Men's	4	5	6	7	8	9	10	11	12	13	14
Women's	6	7	8	9	10	11	12	13	14	15	16

THAT'S NOT MUD

NEW

GB00274 Unisex 6", Brown
MSRP 120.00

NEW

GB00275 Unisex 8", Brown
MSRP 136.00

NEW

GB00276 Unisex 10" Pull-on, Brown
MSRP 136.00

WOLLER, HOOT 'N HOLLER

Georgia Boot MUDDOG

GB00242, GB00243, GB00244



- Flexible molded PU comfort shell is water, oil and chemical-resistant
 - Georgia waterproof system
 - High performance mesh lining
 - Heel-stabilizing Counter Lock
 - AMP LT insole with memory foam
 - Oil and slip-resistant rubber outsole
- M&W 8-12,13,14



- | | |
|---------------------------|------|
| Slip-Resistance, Wet/Dry | ●●●● |
| Slip-Resistance, Wet/Oily | ●●●● |
| Oil-Resistance | ●●●● |
| Chemical-Resistance | ●●●● |
| Abrasion-Resistance | ●●●● |
| Heat-Resistance | ●●●● |

G5514, G5655, G4434, G5594, G6633



- Full-grain SPR™ leather upper
- Molded waterproof TPU shell
- High-abrasion and moisture wicking mesh lining
- CC5 Comfort Core removable insole
- Steel shank
- Lightweight molded PU midsole



- | | |
|--------------------------|------|
| Slip-Resistance, Wet/Dry | ●●●● |
| Oil-Resistance | ●●●● |
| Chemical-Resistance | ●●●● |
| Abrasion-Resistance | ●●●● |



GB00242 Men's 8" Pull-On, Black
MSRP 138.00



GB00243 Men's 11" Pull-On, Barracuda
MSRP 168.00



GB00244 Men's 11" Western Pull-On, Brown
MSRP 162.00



G5514 Men's 11", Mississippi Brown
M 7-12,13,14 / W 8-12,13
MSRP 150.00



G5655 Men's 11", Soggy Brown
M 7-12,13,14 / W 8-12,13,14
MSRP 156.00



G4434 G5594 Men's 11", Georgia Brown
M&W 8-12,13
MSRP G4434: 150.00 / G5594: 162.00

- | | |
|--------------------------|------|
| Slip-Resistance, Wet/Dry | ●●●● |
| Oil-Resistance | ●●●● |
| Chemical-Resistance | ●●●● |
| Abrasion-Resistance | ●●●● |
| Heat-Resistance | ●●●● |



G6633 Men's 6", Topsoil Brown
M&W 8-12,13,14
MSRP 168.00

- | | |
|---------------------|------|
| Slip-Resistance | ●●●● |
| Oil-Resistance | ●●●● |
| Chemical-Resistance | ●●●● |
| Abrasion-Resistance | ●●●● |



GBR

GEORGIA BOOT RUBBER



- 5mm neoprene and rubber on GB00230, GB00231
- Rubber and nylon on GB00180
- Vulcanized rubber construction
- Georgia waterproof system
- Fiberglass shank
- AMP LT insole with memory foam
- Rubber heel kick plate for ease of boot removal
- Oil and slip-resistant rubber outsole



- Slip-Resistance, Wet/Dry
- Slip-Resistance, Wet/Oily
- Oil-Resistance



GB00180 Men's 40" Hip Boot, Olive
• Briar-resistant
M 8-13 Whole sizes only
MSRP 114.00



+SIZES

GB00230 Men's 16" Pull-On, Olive
• Stretch neoprene gusset with adjustable locking strap for universal comfort & calf fit
M 8-14 Whole sizes only
MSRP 108.00



+SIZES

GB00231 Men's 10" Pull-On, Olive
M 8-14 Whole sizes only
MSRP 96.00

- Full-grain SPR™ leather
- Goodyear welt construction
- Covered cushion insole
- Padded tongue & gusset (except pull-ons)
- Steel shank
- Chemical, oil and slip-resistant "Poly Wedge ULTRA" outsole



- Slip-Resistance, Wet/Dry
- Slip-Resistance, Wet/Oily
- Oil-Resistance
- Chemical-Resistance
- Abrasion-Resistance
- Heat-Resistance



+SIZES



G6152 **G6342** Men's 6", Barracuda Gold
G6152: M 5-12,13,14,15 / W 5-12,13,14
G6342: M 7-12,13,14 / W 8-12,13
MSRP G6152: 158.00 / G6342: 164.00



+SIZES



G8152 **G8342** Men's 8", Barracuda Gold
G8152: M&W 7-12,13,14
G8342: M 7-12,13,14 / W 8-12,13,14
MSRP G8152: 172.00 / G8342: 178.00



+SIZES



G5153 **G5353** Men's 10", Barracuda Gold
G5153: M 7-12,13,14,15 / W 7-12,13,14
G5353: M 7-12,13 / W 8-12,13
MSRP G5153: 188.00 / G5353: 194.00



+SIZES



GB1222 **GB00257** Men's Chukka, Barracuda Gold
M&W 7-12,13,14
MSRP GB1222: 144.00 / GB00257: 152.00



GB00133 Men's 6", Barracuda Gold
M&W 7-12,13
MSRP 164.00



+SIZES



GB00177 **GB00256** Men's Moc-Toe 6", Barracuda Gold
GB00177 M&W 8-12,13,14 / GB00256 M&W 7-12,13,14
MSRP GB00177: 158.00 / GB00256: 164.00

WEDGE



A special tanning process makes SPR leather 3 times stronger and 2 1/2 times more abrasion-resistant than conventional leather

GOOD TO GROW

CARBO-TEC LT

- Full-grain leather
- Goodyear® welt construction
- High performance mesh lining
- Back zipper for easy on/off on select styles
- Fiberglass shank
- Heel-stabilizing Counter Lock

- Cushion EVA midsole
 - Quick Response PU foam removable insole
 - Ergo-Fit safety toe designed to match contours of feet, providing superior comfort and flexibility (PT styles ONLY)
 - Slip and oil-resistant, dual density and abrasion-resistant Carbo-Tec™ rubber outsole
- M&W 8-12,13,14 Unless otherwise noted



Slip-Resistance, Wet/Dry	●●●●
Slip-Resistance, Wet/Oily	●●
Oil-Resistance	●●●●
Chemical-Resistance	●●●●
Abrasion-Resistance	●●●●
Heat-Resistance	●●●●



GB00308 Men's 11" Pull-on, Brown

MSRP 178.00



GB00309 Men's 8" Lacer, Brown

M&W 7-12,13,14
MSRP 184.00



GB00310 Men's 10" Pull-on, Brown

MSRP 184.00



GB00264 Men's 11" Pull-on, Square Toe, Brown

MSRP 196.00



GB00263 Men's 11" Pull-on, Square Toe, Red/Brown

MSRP 192.00



GB00266 **GB00267** 11" Pull-on, Square Toe, Brown/Black

MSRP GB00266: 196.00 / GB00267: 204.00



GB00239 Men's 11" Pull-On, Round Toe, Brown

MSRP 204.00



GB00240 Men's 11" Pull-On, Round Toe, Green

MSRP 184.00



GB00241 Men's 11" Pull-On, Round Toe, Burnt Orange

MSRP 196.00



GB00223 Men's 11" Pull-On, Square Toe, Brown

MSRP 172.00



GB00269 **GB00224** Men's 10" Pull-On, Square Toe, Brown

MSRP GB00269: 184.00 / GB00224: 192.00



GB00221 **GB00222** Men's 11" Pull-On, Square Toe, Brown/Red

MSRP GB00221: 186.00 / GB00222: 196.00

CARBO-TEC

- Full-grain SPR™ leather
 - Goodyear welt construction
 - Fiberglass shank
 - Non-metallic
 - CC6 Comfort Core® removable insole
 - Oil and slip-resistant rubber Carbo-Tec™ outsole
- D 7-12,13,14 / EE 7-12,13,14



- Slip-Resistance, Wet/Dry ●●●●
- Oil-Resistance ●●●●
- Chemical-Resistance ●●●●
- Abrasion-Resistance ●●●●
- Heat-Resistance ●●●●



G5814 Men's 11", Prairie Chestnut
MSRP 186.00



SUSPENSION HEEL

- Full-grain leather
- Steel shank
- CC5 Comfort Core® removable insole
- Polyurethane oil and slip-resistant Georgia Boot Suspension Heel outsole



- Slip-Resistance, Wet/Dry ●●●●
- Oil-Resistance ●●●●
- Chemical-Resistance ●●●●
- Abrasion-Resistance ●●●●
- Heat-Resistance ●●●●



G4673 Men's 11", Brown
M 7-12,13 / W 8-12,13
MSRP 208.00



PLEASE NOTE:
Shoes that are Static
Dissipative are not
Electrical Hazard



GB00085 - Men's 11", Crazy Horse
M&W 8-12,13
MSRP 170.00

LACER

- Full-grain SPR™ leather
 - Removable brush guard kiltie
 - Internal padded collar
 - Goodyear welt construction
 - Unlined, flex-notched quarters
 - Solid brass stud hooks
 - Covered cushion insole
 - Steel shank
 - Proprietary oil-resistant polyurethane "X-10" outsole
- M 7-12,13,14 / W 8-12,13,14



- Slip-Resistance, Wet/Dry ●●●●
- Oil-Resistance ●●●●
- Chemical-Resistance ●●●●
- Abrasion-Resistance ●●●●
- Heat-Resistance ●●●●



G7014 Men's 8", Barracuda Walnut
MSRP 172.00

SUSPENSION WEDGE

- Full-grain SPR™ leather
 - Fully lined with breathable moisture-wicking material
 - Steel shank
 - CC5 Comfort Core® removable insole
 - Direct attached dual-density, oil-resistant polyurethane "Suspension Wedge" outsole
- M/W 7-12,13,14,15



- Slip-Resistance, Wet/Dry ●●●●
- Oil-Resistance ●●●●
- Chemical-Resistance ●●●●
- Abrasion-Resistance ●●●●
- Heat-Resistance ●●●●



G4432 Men's 11", Mississippi Tan
MSRP 194.00

MOC-TOE SIDE-ZIP

- Full-grain SPR™ leather
 - Goodyear welt construction
 - Georgia waterproof system
 - Solid brass zipper
 - Adjustable leather in-step strap
 - Removable polyurethane insert
 - Steel shank
 - Beaded storm welt
 - Proprietary oil-resistant polyurethane "X-10" outsole
- M 7-12,13 / W 8-12,13



- Slip-Resistance, Wet/Dry ●●●●
- Oil-Resistance ●●●●
- Chemical-Resistance ●●●●
- Abrasion-Resistance ●●●●
- Heat-Resistance ●●●●



G4124 Men's 10", Soggy Copper Kettle
MSRP 212.00

CEDAR FALLS

- Full-grain leather
 - Moisture management lining
 - AMP, Advanced Memory polyurethane insole
 - Lightweight rubber outsole
- M&W 8-12,13,14



G050 - Men's Moc-Toe Oxford, Tan
MSRP 102.00

GEORGIA GIANT



ROMEOS FOR THE WHOLE FAMILY

WOMEN'S PAGE 40
KID'S PAGE 42



- Full-grain leather
- High-performance lining
- Goodyear welt construction
- Steel shank
- Mesh-covered cushion insole
- EVA midsole
- Oil-resistant bumper guard (on most styles)
- Oil and slip-resistant polyurethane "Georgia Giant" outsole (unless otherwise noted)



- Slip-Resistance, Wet/Dry ●●●●
- Oil-Resistance ●●●●
- Chemical-Resistance ●●●●
- Abrasion-Resistance ●●●●
- Heat-Resistance ●●



- Slip-Resistance, Wet/Dry ●●●●
- Oil-Resistance ●●●●
- Chemical-Resistance ●●●●
- Abrasion-Resistance ●●●●
- Heat-Resistance ●●●●

Chemical and oil-resistant "Poly Wedge ULTRA" outsole



- Slip-Resistance, Wet/Dry ●●
- Oil-Resistance ●●●●
- Chemical-Resistance ●●●●
- Abrasion-Resistance ●●●●
- Heat-Resistance ●●



+SIZES

G6274 G6374 Men's 6", Soggy Brown
G6274: M 6.5-12,13,14,15,16,17 / W 6.5-12,13,14,15
G6374: M 7-12,13,14,15,16,17 / W 7-12,13,14,15
MSRP G6274: 138.00 / G6374: 144.00

Also available in Women's on pg. 40



+SIZES

G8274 G8374 Men's 8", Soggy Brown
M 7-12,13,14,15,16,17 / W 7-12,13,14,15
MSRP G8274: 148.00 / G8374: 156.00



+SIZES

GR262 GS262 Men's Romeo, Soggy Brown
GR262: M 6.5-12,13,14,15,16,17 / W 7-12,13,14,15
GS262: M 6.5-12,13,14 / W 7-12,13,14
MSRP GR262: 104.00 / GS262: 112.00

Also available in Women's on pg. 40



+SIZES

GR270 Men's Romeo, Black
M 6.5-12,13,14,15 / W 7-12,13,14,15
MSRP 104.00

Also available in Women's on pg. 40



GB00145 Men's Slip-On, Brown Rust
M&W 8-12,13
MSRP 110.00



+SIZES

NEW



GB00249 GB00248 Men's 6", Black
M&W 8-12,13,14
MSRP GB00249: 144.00 / GB00248: 150.00



+SIZES

G4274 G4374 Men's 11" Pull-On, Soggy Brown
G4274: M&W 6.5-12,13,14 / G4374: M&W 7-12,13,14
MSRP G4274: 182.00 / G4374: 190.00



+SIZES



GR500 GR530 Men's High Romeo, Soggy Brown
M&W 8-12,13,14
MSRP GR500: 130.00 / GR530: 136.00



GB00084 Men's High Romeo, Black
M&W 8-12,13
MSRP 130.00



+SIZES

GR274 Men's Romeo Wedge, Soggy Brown
M 6.5-12,13,14,15,16,17 / W 7-12,13,14,15
MSRP 104.00

GEORGIA GIANT REVAMP



- Full-grain SPR™ leather
- GB00320/GB00321 have an improved opening for easy on/off and twin gore panels for a great fit
- Goodyear® welt construction
- High performance mesh lining
- Comfort cover tongue protector on lace up styles
- Double-ribbed, tempered steel shank
- Heel-stabilizing Counter Lock (except GB00320/GB00321)
- ASTM F2892 electrical hazard standard on soft toe styles
- Ergo-Fit safety toe designed to match contours of feet, providing superior comfort and flexibility (PT styles ONLY)
- Oil and slip-resistant polyurethane outsole M&W 8-12,13,14



- | | |
|--------------------------|------|
| Slip-Resistance, Wet/Dry | ●●●● |
| Oil-Resistance | ●●●● |
| Chemical-Resistance | ●●●● |
| Abrasion-Resistance | ●●●● |
| Heat-Resistance | ●● |



GB00316 **GB00317** Men's 6", Brown

MSRP GB00316: 138.00 / GB00317: 144.00



GB00322 Men's 6" Internal Met Guard, Brown

MSRP 158.00



GB00318 Men's 8", Brown

MSRP 148.00



GB00319 Men's 11" Pull-on, Brown

MSRP 148.00 • 900 denier nylon shaft



GB00320 **GB00321** Men's Romeo, Brown

MSRP GB00320: 116.00 / GB00321: 122.00

- Full-grain SPR™ leather
- Combined cement and san crispino construction
- Georgia waterproof system
- High performance mesh lining
- Comfort Cover tongue protector
- Combination eyelet/hook hardware
- AMP (Advanced Memory Polyurethane) insole
- Wide platform TPU Shovel Shank
- Cushion EVA midsole
- Heel-stabilizing Counter Lock
- ASTM F2892 electrical hazard standard on soft toe styles
- Ergo-Fit safety toe designed to match contours of feet, providing superior comfort and flexibility (PT styles ONLY)
- Oil, chemical, abrasion, heat, and slip-resistant rubber outsole M&W 8-12,13,14

Slip-Resistance, Wet/Dry	●●●●
Oil-Resistance	●●●●
Chemical-Resistance	●●●●
Abrasion-Resistance	●●●●



GB00312 **GB00313** Men's 6", Brown

MSRP GB00312: 170.00 / GB00313: 176.00



GB00314 Men's 10" Pull-On, Brown

MSRP 184.00



GB00315 Men's Chelsea, Brown

MSRP 150.00

ZIP IT



Georgia Boot ATHENS

NOW with San Crispino construction. The upper leather is wrapped around the lasting board before it's stitched to the outsole which eliminates the raw edge for a more durable product.



- Full-grain leather
- EVA midsole
- TPU shank
- Combined cement and san crispino construction
- Anchor Disk by Georgia - provides added heel support
- ASTM F2892 electrical hazard standard on soft toe styles
- Oil and slip-resistant outsole



Slip-Resistance, Wet/Dry ●●●●
 Oil-Resistance ●●●●
 Chemical-Resistance ●●●●
 Abrasion-Resistance ●●●●



GB00265 Men's 11" Pull-on, Moc-Toe, Brown
 M&W 8-12,13,14
 MSRP 176.00



GB00226 **GB00246** Men's 11" Moc-Toe Pull-On, Brown
 M&W 8-12,13,14
 MSRP GB00226: 170.00 / GB00246: 176.00



GB00245 Men's 8" Moc-Toe, Brown
 M&W 8-12,13,14
 MSRP 186.00 • Waxed canvas upper



GB00156 Men's 5" Moc-Toe Chelsea, Brown
 M&W 8-12,13
 MSRP 150.00



G7403 **G7603** Men's 6" Moc-Toe, Brown
 G7403: M&W 8-12,13,14 / G7603: M&W 8-12,13
 MSRP G7403: 168.00 / G7603: 174.00



G9453 Men's 8" Moc-Toe, Brown
 M&W 8-12,13
 MSRP 180.00



G4403 **G4603** Men's 10" Moc-Toe Pull-On, Brown
 M&W 8-12,13,14
 MSRP G4403: 190.00 / G4603: 194.00



GET READY TO RUMBLE

GEORGIA BOOT RUMBLER



- Full-grain leather upper, TPU infused nylon on GB00311
 - High performance mesh lining
 - Georgia waterproof system
 - Combination eyelet/hook hardware
 - AMP LT insole with memory foam
 - Double ribbed steel shank (except GB00311)
 - Fiberglass shank on GB00311
 - Internal EVA midsole encapsulated in external TPU heel stabilizer
 - External TPU toe cap for added protection and durability
 - Ergo-Fit safety toe designed to match contours of feet, providing superior comfort and flexibility (on PT styles)
 - Oil, chemical, abrasion, heat and slip-resistant rubber outsole
- M&W 8-12,13,14



- Slip-Resistance, Wet/Dry ●●●●
- Slip-Resistance, Wet/Oily ●●●●
- Oil-Resistance ●●●●
- Chemical-Resistance ●●●●
- Abrasion-Resistance ●●●●
- Heat-Resistance ●●●●



NEW
SOFT TOE
EH

GB00299 **GB00284** Men's 6", Brown
MSRP GB00299: 174.00 / GB00284: 180.00



NEW

GB00285 Men's 8", Brown
MSRP 192.00



NEW

GB00286 Men's 10" Pull-On, Brown
MSRP 192.00



NEW

NON METALLIC

GB00311 Men's 6", Black
MSRP 180.00



THE SOUL OF THE SOLE

- 1 Durable external TPU heel stabilizer completely encapsulates the midsole protecting it from chemicals, abrasion and general wear and tear
- 2 Double ribbed steel shank provides stability and support for all day comfort
- 3 Internal EVA midsole absorbs the shock of each step to guard against foot fatigue
- 4 Oil, chemical, abrasion, heat and slip-resistant rubber outsole for long lasting durability

AMPLIFY YOUR COMFORT

Georgia Boot AMP LITUDE



- Full-grain leather (Full-grain leather and man-made materials on GB00216, GB00217)
- Georgia waterproof system
- High performance mesh lining
- AMP, Advanced Memory Polyurethane insole
- Cradle lacing system
- EVA midsole
- Nylon shank
- Ergo-Fit safety toe designed to match contours of feet, providing superior comfort and flexibility (on PT styles only)
- Oil and slip-resistant outsole



- Slip-Resistance, Wet/Dry ●●●●
- Oil-Resistance ●●
- Chemical-Resistance ●●
- Abrasion-Resistance ●●●●
- Heat-Resistance ●●●●



+SIZES

GB00216 Men's 5" Hiker, Brown
M&W 8-12,13,14
MSRP 152.00

- Reflective webbing for additional safety



+SIZES

GB00217 Men's 5" Hiker, Black
M&W 8-12,13,14
MSRP 144.00

- Reflective webbing for additional safety



GB00128 **GB00129** Men's 6", Brown
M&W 8-12,13
MSRP GB00128: 170.00 / GB00129: 178.00



+SIZES

GB00130 Men's 6", Black
M&W 8-12,13,14
MSRP 178.00

Georgia Boot BLUE COLLAR

- Full-grain leather
- Georgia waterproof system
- Highly breathable moisture wicking lining
- Flexible cement construction
- Nylon shank
- EVA midsole
- Abrasion-resistant heel
- Molded TPU toe guard
- Ergo-Fit safety toe designed to match contours of feet (on PT styles only)
- TDC, Technology Driven Comfort insole
- Oil and slip-resistant rubber outsole

- Slip-Resistance, Wet/Dry ●●●●
- Slip-Resistance, Wet/Oily ●●●●
- Oil-Resistance ●●●●
- Chemical-Resistance ●●●●
- Abrasion-Resistance ●●●●
- Heat-Resistance ●●●●



+SIZES

GB00107 **GB00108** Men's 6" Hiker, Brown
GB00107: M&W 8-12,13 / GB00108: M&W 8-12,13,14
MSRP GB00107: 150.00 / GB00108: 158.00



NON METALLIC

GB00106 Men's Chelsea, Brown
M&W 8-12,13
MSRP 138.00



Women's

GB00158 Women's 5" Hiker, Dark Brown
M&W 6-10
MSRP 150.00



TAKING WORK TO NEW HEIGHTS

Georgia Boot
REFLEX
time to **REthink** your work footwear

Responsive DESIGN
Resilient MATERIALS
Refreshingly LIGHTWEIGHT



GB00273 Men's High Athletic, Black/Grey
MSRP 116.00



GB00218 Men's Athletic, Black/Grey
MSRP 100.00



GB00219 Men's Athletic, Black/Orange
MSRP 100.00



GB00220 Men's Athletic, Black
MSRP 108.00



GB00233 Women's Athletic, Black/Teal
MSRP 100.00



GB00234 Women's Athletic, Black/Grey
MSRP 100.00

AMP LT **ERGO-FIT SAFETY TOE** **+SIZES**

- High performance abrasion-resistant mesh upper with TPU overlay for added durability
- High performance mesh lining
- Flexible strobel construction
- Lightweight and breathable
- Nylon shank
- AMP LT insole with memory foam
- Ergo-Fit safety toe designed to match contours of feet, providing superior comfort and flexibility
- Oil and slip-resistant EVA/rubber outsole

Men's: M 8-12,13,14 / W 8-12,13,14,15
Women's: M&W 6-10

Slip-Resistance, Wet/Dry ●●●●
Oil-Resistance ●●●●●
Chemical-Resistance ●●●●●
Heat-Resistance ●●●●

PLEASE NOTE: Shoes that are Static Dissipative are not Electrical Hazard.
Static Dissipative - F2413 Static Dissipative Classification

THERE'S NO BOOT LIKE HOMELAND



HOMELAND By Georgia Boot



- Full-grain waterproof leather with 900D CORDURA® (except GB00300)
- Brass hardware on lace ups
- TDC, Technology Driven Comfort insole
- Steel shank
- Direct attached oil-resistant PVC outsole



- Slip-Resistance, Wet/Dry ●●●
- Oil-Resistance ●●●
- Chemical-Resistance ●●●
- Abrasion-Resistance ●●●
- Heat-Resistance ●●●

G106 G105 Men's 6", Brown
MSRP G106: 112.00 / G105: 118.00

GB00326 400g Thinsulate Ultra INSULATION
MSRP 122.00

G108 G107 Men's 8", Brown
MSRP G108: 124.00 / G107: 130.00

G109 G110 600g Thinsulate Ultra INSULATION
MSRP G109: 128.00 / G110: 144.00

G113 G111 Men's 11" Pull-On, Brown
MSRP G113: 112.00 / G111: 118.00

GB00300 Men's 11" Pull-On, Brown
MSRP 116.00

• Unlined



- Full-grain leather
- Georgia waterproof system
- Padded collar
- Fully lined with breathable moisture wicking material
- CC6 Comfort Core® removable insole
- Integrated TPU heel stabilizer
- Thermo-polyurethane shank
- Direct attached dual-density polyurethane and rubber outsole



- Slip-Resistance, Wet/Dry ●●●●
- Slip-Resistance, Wet/Oily ●●●●
- Oil-Resistance ●●●●
- Chemical-Resistance ●●●●
- Abrasion-Resistance ●●●●
- Heat-Resistance ●●●●

FLX POINT



- Soft, Premium, Comfortable SPC leather
 - Georgia waterproof system
 - Lightweight and flexible cement construction
 - High performance mesh lining
 - Padded collar and tongue
 - Nylon shank
 - Abrasion-resistant heel
 - Cushion EVA midsole
 - CC6 Comfort Core® removable insole
 - Ergo-Fit safety toe designed to match contours of feet (on PT styles only)
 - Oil and slip-resistant rubber outsole
- M&W 8-12,13



- Slip-Resistance, Wet/Dry ●●●●



- Full-grain SPR™ leather
 - Georgia waterproof system
 - Flex notched quarters
 - TPU shank
 - Direct attached construction
 - CC6 Comfort Core® removable insole
 - Oil and slip-resistant polyurethane "FLX Work" outsole
- M 7-12,13 / W 8-12,13



- Slip-Resistance, Wet/Dry ●●●●
- Oil-Resistance ●●●●
- Chemical-Resistance ●●●●
- Abrasion-Resistance ●●●●
- Heat-Resistance ●●●●





**DON'T
DRAG ME
DOWN MAN**

BROOKVILLE

- Contrasting leather upper
 - Georgia waterproof system
 - Removable EVA insole
 - Goodyear welt construction
 - Steel shank
 - Lightweight blown rubber outsole
- M&W 8-12,13



- Slip-Resistance, Wet/Dry ●●●
- Oil-Resistance ●●●●
- Chemical-Resistance ●●●●
- Abrasion-Resistance ●●●
- Heat-Resistance ●●



G7134 G7334 Men's 6", Dark Brown

MSRP G7134: 118.00 / G7334: 124.00



G9134 G9334 Men's 8", Dark Brown

MSRP G9134: 128.00 / G9334: 134.00

EAGLE LIGHT

- Full-grain leather
 - Padded collar
 - High performance mesh lining
 - Opanka construction
 - Steel shank
 - Oil and slip-resistant "Eagle Light Lug" polyurethane outsole
- M&W 8-12,13

- Slip-Resistance, Wet/Dry ●●●
- Oil-Resistance ●●●●
- Chemical-Resistance ●●●●
- Abrasion-Resistance ●●●●
- Heat-Resistance ●●



G8083 Men's 8", Russet Wildwood

MSRP 140.00



G6395 Men's 6" Wide Load Hiker, Soggy Dark Brown

MSRP 156.00

ZERO DRAG

- Full-grain waterproof leather
 - Georgia waterproof system
 - Brass hardware
 - Padded collar
 - Moisture management lining
 - Nylon shank
 - CC5 Comfort Core removable insole
 - Toe and heel guard for added protection and durability
 - Oil and slip-resistant outsole with TPU skin
- M&W 8-12,13



- Slip-Resistance, Wet/Dry ●●●
- Oil-Resistance ●●●●
- Chemical-Resistance ●●●●
- Abrasion-Resistance ●●●●
- Heat-Resistance ●



G086 Men's 6", Brown

MSRP 178.00

OILER

- Full-grain leather
 - Georgia waterproof system
 - Padded collar and tongue
 - Removable EVA insole
 - Goodyear welt construction
 - Durable oil and slip-resistant rubber outsole
- M&W 7-12,13,14,15



- Slip-Resistance, Wet/Dry ●●●
- Oil-Resistance ●●●●
- Chemical-Resistance ●●●●
- Abrasion-Resistance ●●●●
- Heat-Resistance ●●●●



G6174 Men's 6", Dark Brown

MSRP 110.00

DRILL DOG



- Full-grain leather upper
 - Georgia waterproof system
 - High performance lining
 - Milled nickel hardware
 - TDC (Technology Driven Comfort) polyurethane insole
 - EVA midsole
 - Steel shank
 - High abrasion toe and heel
 - XRD® Internal Met Guard (soft internal met guard)
 - ASTM F2413 Metatarsal Protection standard
 - ASTM F2413 Electrical Hazard standard
 - ASTM F2413 Impact & Compression standard
 - Slip and oil-resistant rubber Vibram® outsole
- M 7-12,13,14 / W 8-12,13,14



Slip-Resistance, Wet/Dry
Heat-Resistance



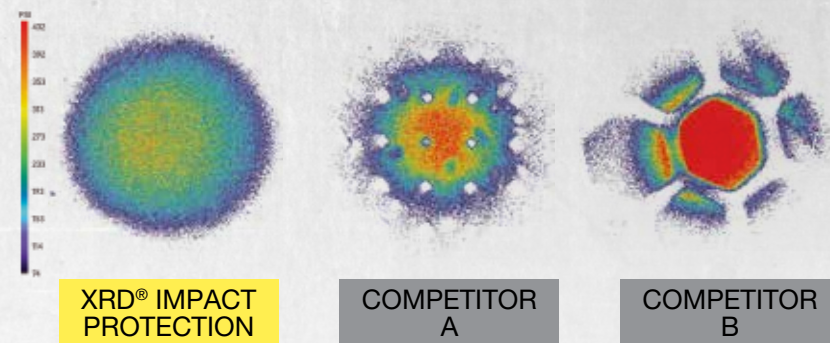
GB00323 Men's 9", Brown/Black

MSRP 220.00

TESTED. PROVEN.

THE MOST ADVANCED IMPACT PROTECTION AVAILABLE

LET NOTHING HOLD YOU BACK



- Engineered to absorb maximum shock, hit after hit
- Proven to absorb up to 90% of the most extreme impacts, while maintaining 98% of the original performance
- Designed for a lightweight, comfortable fit

ATTENTION - PREMIUM PRODUCT: Please note, the padding system within this garment is a premium product and must be treated as such. Exposing the pad to high temperature washing and drying could result in damage to the pads themselves.

ROGERS CORPORATION No impact absorbing material can prevent all injuries that may occur when the body is subjected to impact. XRD® is a trademark of Rogers or its affiliate. © 2017 Rogers Corporation

ANTI Impact®

EXTREME FLEXIBLE PROTECTION

FLEXIBLE ASTM APPROVED MET GUARD MATERIAL FIRMS INSTANTLY WHEN STRUCK

TO OFFER THE SAME LEVEL OF PROTECTION AS RIGID MET GUARDS

AFTER IMPACT, THE REVOLUTIONARY MATERIAL RETURNS TO ITS SOFT, FLEXIBLE STATE, PROVIDING THE WEARER WITH THE **ULTIMATE PROTECTION AND COMFORT**



- Full-grain leather
 - Double-padded leather collar
 - Fully lined with breathable moisture-wicking lining
 - Goodyear welt construction
 - CC6 Comfort Core® removable insole
 - Steel shank
 - Oil-resistant rubber "Hammer" outsole
- M&W 8-12,13,14



Slip-Resistance, Wet/Dry
Oil-Resistance
Chemical-Resistance
Abrasion-Resistance
Heat-Resistance



G6315 Men's 6" Internal Met Guard, Briar Brown

MSRP 178.00



G8315 Men's 8" Internal Met Guard, Briar Brown

MSRP 188.00

STAND TALL



LOGGER



- Full-grain SPR™ leather
- Goodyear® welt construction
- Georgia waterproof system
- Grip panels for easy pull on, on all 9" styles
- Padded collar for added comfort
- Milled brass hardware
- AMP LT insole with memory foam
- Double-ribbed, tempered steel shank
- Heel-stabilizing Counter Lock
- Removable brush guard kiltie
- ASTM F2892 electrical hazard standard on soft toe styles
- Ergo-Fit safety toe designed to match contours of feet, providing superior comfort and flexibility (*On PT styles ONLY*)
- Oil and slip-resistant rubber lug outsole



- Slip-Resistance, Wet/Dry ●●
- Slip-Resistance, Wet/Oily ●●●
- Oil-Resistance ●●●●
- Chemical-Resistance ●●●●
- Abrasion-Resistance ●●
- Heat-Resistance ●●●●



GB00270 Men's 6" Low-Heel Logger, Brown
MSRP 166.00



GB00271 **GB00272** Men's 9" Low-Heel Logger, Black
• Also comes with black laces
MSRP GB00271: 176.00 / GB00272: 184.00



GB00235 **GB00236** Men's 9" Logger, Brown
MSRP GB00235: 176.00 / GB00236: 184.00



GB00237 **GB00238** Men's 9" Low-Heel Logger, Brown
MSRP GB00237: 176.00 / GB00238: 184.00



GB00262 Men's 9", Brown
MSRP 190.00



GB00260 **GB00261** Men's 9" Low-Heel Logger, Brown
MSRP GB00260: 182.00 / GB00261: 190.00



TIMBRRR



COMFORT CORE
LOGGER
RUGGED NEVER FELT SO GOOD

- Full-grain leather
 - Milled nickel or brass hardware
 - Georgia waterproof system
 - High performance mesh lining
 - Premium nylon laces - guaranteed for life
 - Dual-density PU and memory foam CC7 removable insole
 - Removable brush guard kiltie
 - Durable double-ribbed tempered steel shank
 - Heel-stabilizing Counter Lock
 - Goodyear® welt construction
 - ASTM F2892 electrical hazard standard on soft toe styles
 - Ergo-Fit safety toe designed to match contours of feet (on PT styles only)
 - Oil and slip-resistant Vibram® rubber outsole
- M&W 8-12,13



- Slip-Resistance, Wet/Dry ●●●
- Oil-Resistance ●●●●
- Chemical-Resistance ●●●●
- Abrasion-Resistance ●●●●
- Heat-Resistance ●●●●

- Full-grain leather
- Goodyear welt construction
- 400g 3M Thinsulate™ Ultra insulation
- Solid stud hooks & eyelets set on steel washers
- Removable brush guard kiltie
- Steel shank
- Vibram® oil-resistant outsole

M&W 8-12,13

- Slip-Resistance, Wet/Dry ●●●
- Oil-Resistance ●●●●
- Chemical-Resistance ●●●●
- Abrasion-Resistance ●●●●
- Heat-Resistance ●●●●



G9382 Men's 8" 400g, Worn Saddle
MSRP 270.00

- Full-grain leather
- Goodyear welt construction
- Solid stud hooks & eyelets set on steel washers
- GB00065, G7113, 7313 are fully lined
- G8120, G8320 are unlined
- Steel shank
- Removable brush guard kiltie
- Abrasion-resistant rubber "Georgia Logger" outsole



GB00163 **GB00164** Men's 6" Low-Heel, Brown
MSRP GB00163: 214.00 / GB00164: 222.00

GB00122 **GB00123** Men's 8" Low-Heel, Brown
MSRP GB00122: 224.00 / GB00123: 232.00

GB00096 **GB00097** Men's 9", Brown
MSRP GB00096: 224.00 / GB00097: 232.00

GB00098 **400g Thinsulate Ultra**
MSRP 242.00



GB00065 Men's 8" 400g, Brown
M&W 8-12,13,14
MSRP 164.00

- Leather welt

- Slip-Resistance, Wet/Dry ●●●●
- Oil-Resistance ●●●●
- Chemical-Resistance ●●●●
- Abrasion-Resistance ●●●●
- Heat-Resistance ●●●●

G7113 **G7313** Men's 8", Tumbled Chocolate
M&W 7-12,13,14,15
MSRP G7113: 162.00 / G7313: 168.00

- Slip-Resistance, Wet/Dry ●●●●
- Oil-Resistance ●●●●
- Chemical-Resistance ●●●●
- Abrasion-Resistance ●●●●
- Heat-Resistance ●●●●

G8120 **G8320** Men's 8", Black
G8120: M&W 7-11,12,13 / G8320: M&W 8-12,13
MSRP G8120: 156.00 / G8320: 162.00

- Slip-Resistance, Wet/Dry ●●●●
- Oil-Resistance ●●●●
- Chemical-Resistance ●●●●
- Abrasion-Resistance ●●●●
- Heat-Resistance ●●●●

A LOW-HEEL LOGGER BY ANY OTHER NAME... WOULD BE A LACE-TO-TOE



+SIZES

- Full-grain leather
- Georgia waterproof system
- Fully lined
- Goodyear welt construction
- Brass hardware
- Removable brush guard kiltie
- Covered cushion insole
- Steel shank
- Oil and abrasion-resistant Georgia Lug rubber outsole



- Slip-Resistance, Wet/Dry ●●●●
- Slip-Resistance, Wet/Oily ●●●●
- Oil-Resistance ●●●●
- Chemical-Resistance ●●●●
- Abrasion-Resistance ●●●●
- Heat-Resistance ●●●●



**SOFT TOE
EH**

GBOT052 **GBOT053** Men's 6", Chocolate

GBOT052: M&W 8-12,13,14 / GBOT053: M&W 8-12,13
MSRP GBOT052: 158.00 / GBOT053: 164.00



G101 **G103** Men's 8", Chocolate

G101: M&W 8-12,13,14 / G103: M&W 8-12,13
MSRP G101: 162.00 / G103: 168.00



G8044 Men's 8", Wild Bull Copper

M 7-11,12,13 / W 8-11,12,13
MSRP 212.00



+SIZES



G8041 **G8341** Men's 8", Tumbled Chocolate

M&W 8-12,13,14
MSRP G8041: 216.00 / G8341: 222.00



- Full-grain leather
- Goodyear welt construction
- Solid stud hooks & eyelets set on steel washers
- Padded collar
- Fully lined
- Steel shank
- TDC, Technology Driven Comfort insole
- Brass hardware
- Removable brush guard kiltie
- Oil-resistant "Vibram® Lug" rubber outsole



- Slip-Resistance, Wet/Dry ●●
- Oil-Resistance ●●●●
- Chemical-Resistance ●●●●
- Abrasion-Resistance ●●●●
- Heat-Resistance ●●



**Georgia Boot
WATER PROOF
SYSTEM**

G8010 **GBOT078** Men's 8", Black

M&W 8-12,13
MSRP G8010: 186.00 / GBOT078: 192.00



**200g Thinsulate
INSULATION**

+SIZES

G8040 Men's 8", Black

M 5-12,13,14 / W 8-12,13,14
MSRP 236.00

ARCTIC TOE™

by Georgia Boot®



+SIZES

1000g Thinsulate Ultra
INSULATION

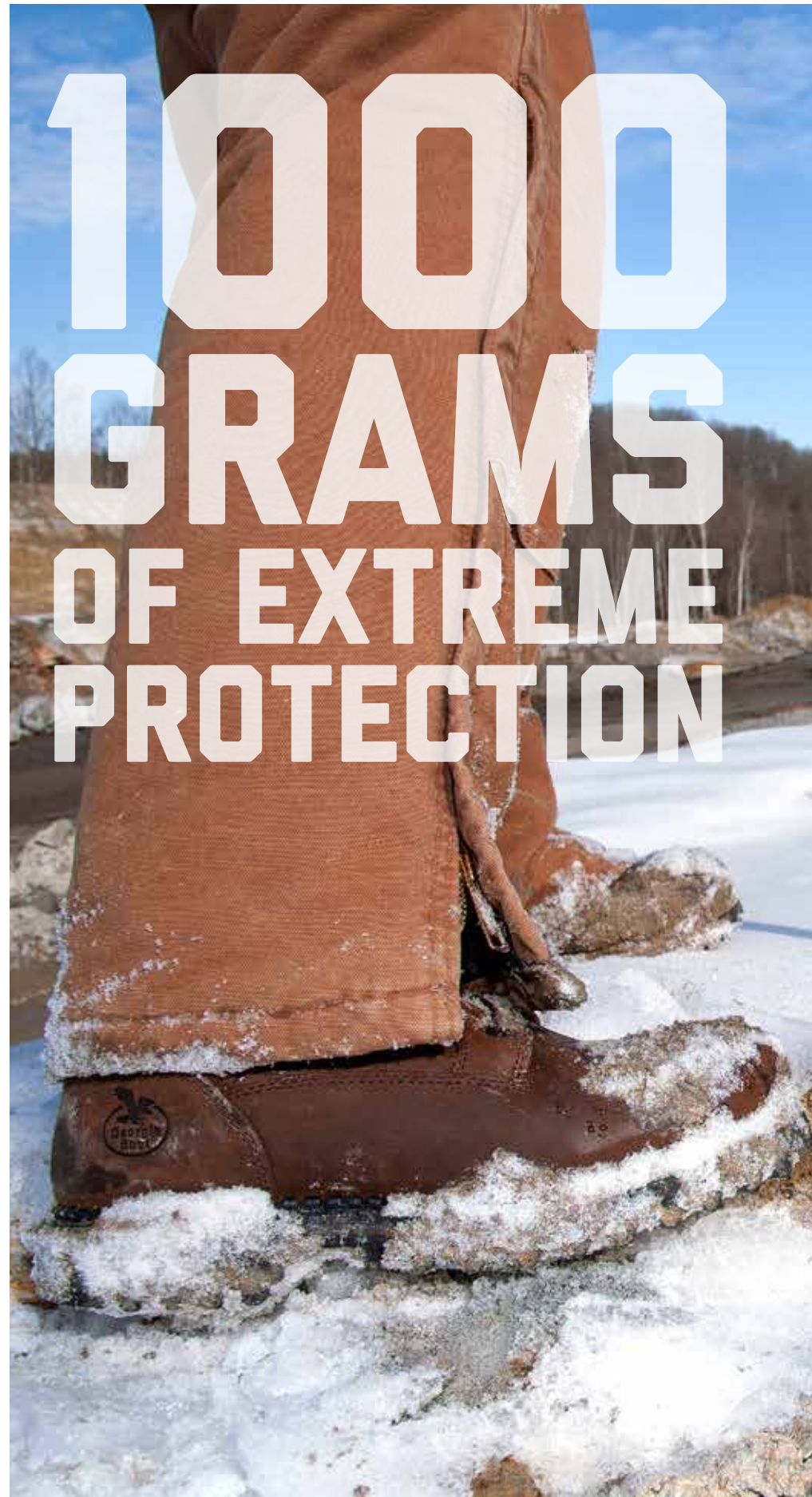
- Full-grain waterproof leather
 - Georgia waterproof system
 - 1000 grams of 3M Thinsulate™ Ultra Insulation
 - Goodyear welt construction
 - Steel shank
 - Removeable polyurethane orthotic insert
 - Oil-resistant rubber "Klaw" outsole
- M 9-12,13,14,15,16,17,18
W 9-12,13,14,15,16,17,18,19,20



- Slip-Resistance, Wet/Dry ●●●●
Oil-Resistance ●●●●
Chemical-Resistance ●●●●
Abrasion-Resistance ●●●●
Heat-Resistance ●●●●



G8162 Men's 9" 1000g, Brown
MSRP 232.00



INSULATED

The products shown on this page are the insulated styles we offer. For a full list of features see the original page listed. The level of insulation you need depends on your environment and your amount of physical activity.



GB00262 Men's 9", Brown **PG 33**
MSRP 190.00



GB00260 **GB00261** Men's 9", Brown **PG 33**
MSRP GB00260: 182.00 / GB00261: 190.00



GB00098 Men's 9", Brown **PG 34**
MSRP 242.00



G9382 Men's 8" 400g, Worn Saddle **PG 35**
MSRP 270.00



GB00065 Men's 8" 400g, Brown **PG 35**
MSRP 164.00



G8040 Men's 8", Black **PG 37**
MSRP 236.00



GB00326 Men's 8" 400g, Brown **PG 26**
MSRP 122.00



G109 **G110** Men's 8" 600g, Brown **PG 26**
MSRP G109: 128.00 / G110: 144.00



G2048 Youth **PG 43**
MSRP 118.00

Women's

GEORGIA GIANT

- Full-grain leather
- High-performance lining
- Goodyear welt construction
- Steel shank
- Mesh-covered cushion insole
- EVA midsole
- Oil-resistant bumper guard
- Oil-resistant polyurethane "Georgia Giant" outsole



- Slip-Resistance, Wet/Dry
- Oil-Resistance
- Chemical-Resistance
- Abrasion-Resistance
- Heat-Resistance



G3374 Women's 6", Soggy Brown
M 5-10,11 / W 6-10,11
MSRP 138.00



GR362 - Women's Romeo, Soggy Brown
M&W 5-10
MSRP 104.00



G3060 - Women's Romeo, Black
M 5-10 / W 6-10
MSRP 104.00



BLUE COLLAR

- Full-grain leather
- Georgia waterproof system
- Highly breathable moisture wicking lining
- Flexible cement construction
- Nylon shank
- EVA midsole
- Abrasion-resistant heel
- Molded TPU toe guard
- Ergo-Fit safety toe designed to match contours of feet
- TDC, Technology Driven Comfort insole
- Oil and slip-resistant rubber outsole



- Slip-Resistance, Wet/Dry
- Slip-Resistance, Wet/Oily
- Oil-Resistance
- Chemical-Resistance
- Abrasion-Resistance
- Heat-Resistance



GB00158 Women's 5" Hiker, Dark Brown
MSRP 150.00

GEORGIA BOOT MARSHLAND



Men's	4	5	6	7	8	9	10	11	12	13	14
Women's	6	7	8	9	10	11	12	13	14	15	16

- Full-grain SPR™ leather upper
- Waterproof rubber shell
- Vulcanized rubber construction
- Mesh lining with cooling fibers
- AMP LT insole with memory foam
- Oil and slip-resistant rubber outsole

UNISEX SIZES M 4-14

Whole sizes only. Order based on Men's sizing.
1/2 sizes should order down.



- Slip-Resistance, Wet/Dry
- Slip-Resistance, Wet/Oily
- Oil-Resistance
- Chemical-Resistance



GB00274 Unisex 6", Brown
MSRP 120.00



GB00275 Unisex 8", Brown
MSRP 136.00



GB00276 Unisex 10" Pull-on, Brown
MSRP 136.00



ReFLX

- High performance abrasion-resistant mesh upper with TPU overlay for added durability
- High performance mesh lining
- Flexible strobel construction
- Lightweight and breathable
- Nylon shank
- AMP LT insole with memory foam
- Ergo-Fit safety toe designed to match contours of feet, providing superior comfort and flexibility
- Oil and slip-resistant EVA/rubber outsole



- Slip-Resistance, Wet/Dry
- Oil-Resistance
- Chemical-Resistance
- Heat-Resistance



GB00233 Women's Athletic, Black/Teal
MSRP 100.00



GB00234 Women's Athletic, Black/Grey
MSRP 100.00

THE APPLE DOESN'T FALL FAR FROM THE TREE



GB00232C Adolescent
8.5-3 MSRP 90.00
GB00232Y Youth
3.5-7 MSRP 104.00

- Dark Brown full-grain leather
- High performance mesh lining
- Light and flexible cement construction
- EVA footbed
- Light EVA/rubber outsole



G099 Adolescent
8.5-3 MSRP 72.00
G100 Youth
3.5-7 MSRP 84.00

- Brown man made upper
- High performance lining
- Pillow top insole
- Lightweight blown rubber outsole



GB202 Youth
8.5-13.5 / 1-7 MSRP 106.00

- Tan full-grain leather
- Unlined quarters
- Lightweight oil-resistant "GX" outsole



GR74 - Adolescent
8.5-13.5 / 1-6 MSRP 86.00
GR14 - Youth
4-8 MSRP 58.00



G204 - Youth Pull-On
8.5-6 MSRP 102.00



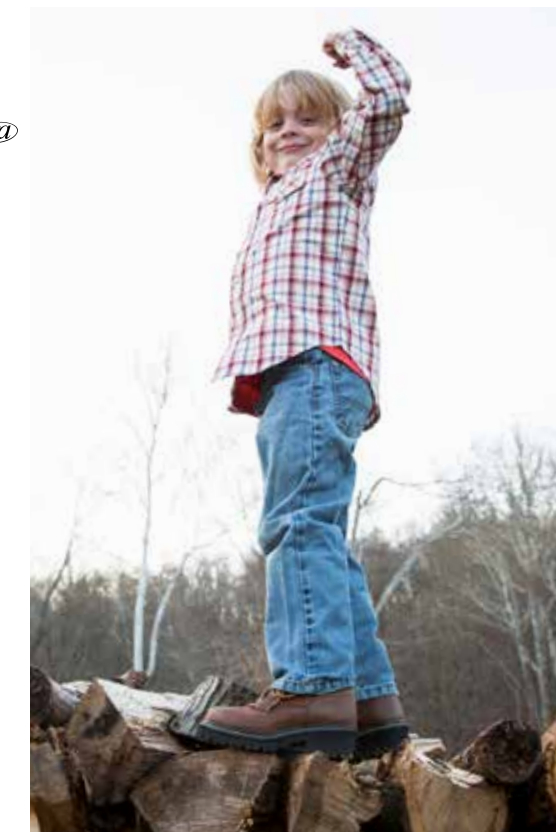
GB00001 Youth Logger
8.5-3 MSRP 110.00
GB00019 Adolescent Logger
3.5-7 MSRP 110.00

- Brown full-grain goat leather
- Georgia waterproof system
- Removable brush guard kiltie
- Georgia Logger outsole



G2048 Youth
8.5-13.5 / 1-7 MSRP 118.00

- Mississippi Tan waterproof leather
- Georgia waterproof system
- Removable orthotic insert
- 400g 3M™ Thinsulate Ultra insulation
- Goodyear welt construction
- Lightweight EVA lug outsole



PUT A SOCK IN IT

SIZE CHART	M	L	XL
Men's	5-9	10-12	13-15
Women's	6-10	11-12	

GB8261 MERINO WOOL LIGHTWEIGHT CREW

- 62% Merino wool, 36% nylon, 2% spandex
- Merino wool naturally regulates temperature and resists odor
- Seamless toe closure

GREY, BLACK M,L,XL
PURPLE M,L
MSRP 13.99



GB8262 MERINO WOOL MID-WEIGHT CREW

- 72% Merino wool, 26% nylon, 2% spandex
- Seamless toe
- Arch support fights fatigue
- Cushioning for impact absorption

GREY, BLACK M,L,XL
STILLWATER M,L
MSRP 14.99



GB8757 MERINO WOOL LIGHTWEIGHT, LOW CUT

- 64% merino wool, 34% nylon, 2% spandex
- Seamless toe closure
- Arch support
- Cushioned foot

JET, OATMEAL, FORGE GREY M,L,XL
SOFT GREY S,M,L
MSRP 11.99



GB8756 MERINO WOOL LIGHTWEIGHT, 1/4 CREW

- 59% merino wool, 39% nylon, 2% spandex
- Seamless toe closure
- Arch support
- Cushioned foot

SAGE, OATMEAL M,L,XL
PEACH S,M,L
MSRP 12.99



GB3000 COTTON CUSHION CREW

- 85% cotton, 13% stretch nylon, 2% spandex
- Heavy cushion foot
- Ravel-free welt top
- Great for protective toe boots
- 2-pair pack

WHITE/GREY M,L,XL
MSRP 11.99



GB3003 4 PACK COTTON CREW

- 85% cotton, 13% stretch nylon, 2% spandex
- Heavyweight cushioned cotton work sock
- Ravel-free welt top
- 4-pair pack

WHITE/GREY M,L,XL
MSRP 19.99



GB3002 MERINO WOOL CREW

- 55% acrylic, 25% wool, 18% nylon, 2% spandex
- Merino wool naturally regulates temperature
- Best sock for all weather
- 1-pair pack

GREY/RED, TAUPE/OLIVE M,L,XL
MSRP 12.99



GB8012 MERINO LAMBSWOOL CREW

- 85% merino lambswool, 13% nylon, 2% spandex
- Wicks moisture away from the skin to keep foot dry and cool in summer, dry and warm in winter
- Arch support, Lycra spandex for durable comfort
- 1-pair pack

GRAPHITE, MOCHA M,L,XL
MSRP 14.99



GB8234 PREMIER MID-CALF

- 64% polyester, 25% nylon, 9% wool, 2% spandex
- Arch Support to fight fatigue
- Great for hiking, casual, and outdoor wear
- Unit type: 1-pair

BLACK M,L,XL
MSRP 15.99



GB8239 CAMO MID-CALF

- 77% wool, 21% nylon, 2% lycra spandex
- Flat seamless toe construction
- Great for work, hunting, and outdoor wear
- Unit type: 1-pair

HUNTER GREEN M,L,XL
MSRP 15.99



GB3001 DRI-KNIT™ CREW

- 62% acrylic, 27% stretch nylon, 9% polyester, 2% spandex
- Dry Knit™ keeps feet dry and warm
- Arch support & stretch top to toe for a snug fit
- 2-pair pack

BROWN, GREY M,L,XL
MSRP 11.99



GB9383 3 PAIR YEAR ROUND VALUE

- 60% acrylic, 23% merino wool, 15% nylon, 2% spandex
- Merino wool naturally regulates temperature
- Wool & acrylic blend keeps feet warm & dry

CHARCOAL M,L,XL
MSRP 19.99



THE GREAT CRATE DEBATE

Two great options to choose from. Fully assembled, ready to sell!

GB3001
48 units (2-pair pack)
MSRP \$575.52

OR

GB9383
33 units (3-pair pack)
MSRP \$659.67



INSOLES

All Georgia Boot Comfort System insoles have a 30 Day Comfort Guarantee. If the consumer decides these insoles are not completely comfortable they can return them to us at for a full refund. In addition, all Georgia Boot Comfort System insoles are also guaranteed against manufacturer defects for one year.

SIZING CONVERSION TRIM TO FIT

	S	M	L	XL	XXL
MEN'S	5-6.5	7-8.5	9-10.5	11-12.5	13-14
WOMEN'S	7-8.5	9-10.5	11-12.5		
U.K.	5-6.5	6-7.5	8-9.5	10-11	12-13
EURO	37-38	39-41	42-43	44-45	46-47



GB00110 AMP

1. Memory foam adjusts for customized cushioning of the entire foot
2. Heel cup provides support and comfort
3. Airflow channels provide cool circulation
4. Polyurethane layer for maximum cushioning

M,L,XL,2XL MSRP 20.00



GB00227 AMP LT

1. Dual layer combination of polyurethane bottom and a memory foam top to ensure that each insole is custom molded to your own foot
2. Heel cup provides support and comfort
3. Fits most Georgia Boot and competitors styles

S,M,L,XL,2XL MSRP 18.00



GB00111 CC5

1. Ergonomic Arch Support relieves foot fatigue and provides added comfort
2. Airflow channels provide cool circulation
3. Polyurethane layer for maximum cushioning

M,L,XL,2XL MSRP 18.00



INDUSTRIAL

- Full-grain leather upper
- Padded collar and tongue
- Shock absorbing EVA midsole
- Michelin footwear's exclusive OrthoFrame footbed provides unparalleled support, enhanced air circulation and maximum cushioning
- Michelin HydroEdge dual-density, molded rubber, oil and abrasion-resistant outsole

M 7.5-12,13,14 / W 8-12,13,14

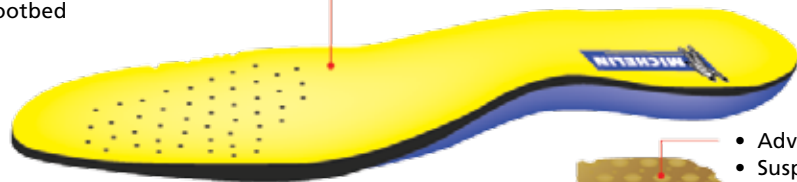


- TriFusion rubber outsole grips wet and dry surfaces and has high durability
- Firm outer lugs for mechanical traction with soft gripping interior tread are based on the Michelin HydroEdge tire design
- Bi-directional traction grips during all movements on wet or dry floor surfaces



Michelin O₂F vent technology forces air circulation through the vents providing maximum circulation and ventilation around the foot.

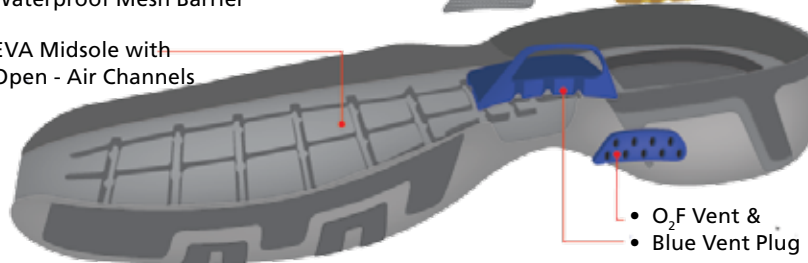
- OrthoFrame Footbed



- Advanced Rear Suspension

- Microperforated
- Waterproof Mesh Barrier

- EVA Midsole with
- Open - Air Channels



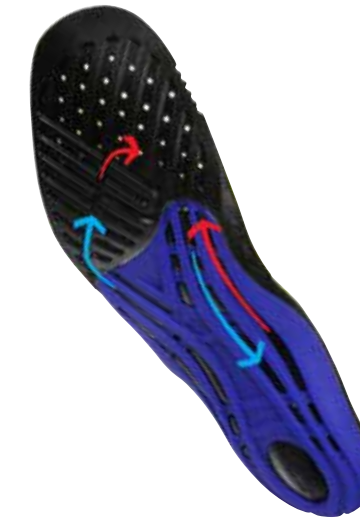
- O₂F Vent & Blue Vent Plug

HEAVY INDUSTRIAL

- Full-grain leather upper
- Padded collar and tongue
- Shock-absorbing EVA midsole
- Michelin Footwear's exclusive OrthoFrame footbed provides unparalleled support, enhanced air circulation and maximum cushioning
- Michelin Pilot Exalto dual-density, molded rubber, oil and abrasion-resistant outsole



- Michelin single high density rubber provides traction and long wear
- High angle directional tread with open edge design easily releases debris away from the boot
- Bi-directional traction grips during all movements on indoor and outdoor terrain



INDUSTRIAL AND HEAVY INDUSTRIAL COMFORT FEATURES

Orthotic chassis insole

A shock absorbing polyurethane footbed that provides cushioning all day long. The thermo-plastic urethane chassis is biometrically engineered to give added arch and heel support. Special channels are engineered into the chassis to circulate air throughout the boot with every step you take, keeping your feet cool and dry.

Comfort Safety Toe

A molded rubber liner is attached to all Michelin safety toes to alleviate discomfort caused by the edge of the toe cap rubbing the top of your foot. It also prevents the lining from "bunching" up above your toes.



+SIZES

XHY662 HydroEdge **WATERPROOF**

MSRP 182.00



PR

+SIZES

XHY866 HydroEdge **WATERPROOF**

MSRP 190.00



PM

+SIZES

XPX763 6" Pilot Exalto, INTERNAL MET

- Board lasted construction

M 7.5-12,13,14 / W 8-12,13,14

MSRP 190.00



PM

+SIZES

XPX761 6" Sledge, MET GUARD

- Flexible Strobel construction
- Brass hardware

M 7.5-12,13,14 / W 8-12,13,14

MSRP 194.00



PM

+SIZES

XPX781 8" Sledge, MET GUARD

- Flexible Strobel construction
- Brass hardware

M 7.5-12,13,14 / W 8-12,13,14

MSRP 202.00