



# Carving Station Solutions

*Supermarkets & Delis  
Restaurants & Cafés • Clubs & Bars*



**DCSB400-1CM** above **HGSM-1P** *pg. 2*



**DCSB400-R24-1** with standard Night Sky base and optional Bright Brass post and shade *pg. 2*



**DCSB400-R24-1** with optional Gray Granite base and standard Bright Nickel post and shade. Shown with **GR2S-36** *pg. 2*



**DCSB400-R24-1** with optional Gray Granite base and standard Bright Nickel post and shade *pg. 2*



**GRCsCL-24** with accessory left-hand sneeze guard, drip pan and cutting board *pg. 3*



**ACCESSORIES (CSCL-BOARD shown)** *pgs. 2-3*



# Carving Station Solutions

## Decorative Carving Stations

Decorative Carving Stations provide proper food serving temperatures, and combines the Hatco Decorative Heat Lamp with the Swanstone® Heated Base to create an attractive carving display. Perfect for chef stations in restaurants, hotels, country clubs, casinos and any catered events.

- Post Mount, Counter Mount or Freestanding with a rounded or rectangular heated stone base (DCS400-1, -1CM do not have bases)
- Patented telescoping heated decorative lamp with a 30° shade pivot
- Heated stone bases are made of foodsafe materials
- Heated base is controlled by an adjustable thermostat and power switch
- Units come with matching cutting board (except DCS400-1, -1CM), keeping juices contained and tablecloths clean



**DCS400-1CM**  
with optional Bright Brass post and optional Bermuda Sand trim ring



**DCSB400-R24-1**  
with optional Bermuda Sand base and standard Bright Nickel post and shade



**DCSB400-3624-2**  
with standard Night Sky base and standard Bright Nickel posts and shades



**DCS400-1**  
with optional Bright Brass post and shade and black base

### DECORATIVE CARVING STATIONS

Model	No. of Lamps	Width	Heated Base Surface Area	Voltage		Ship Weight
				Single Phase Only	Watts	
<b>DCS400-1</b>	1	8"	–	120	250	32 lbs.
<b>DCS400-1CM</b>	1	6 1/8"	–	120	250	17 lbs.
<b>DCSB400-R24-1</b>	1	26"	24" Diameter	120	600	75 lbs.
<b>DCSB400-2420-1</b>	1	24"	24"W x 20"D	120	750	106 lbs.
<b>DCSB400-3624-2</b>	2	36"	36"W x 24"D	120	1300	154 lbs.

#### All Decorative Carving Stations Feature:

Plug: NEMA 5-15P.

Models Shipped with: **DCS400-1, -1CM:** One clear coated bulb. **DCS400-1** includes black base.

**DCSB400-R24-1, -2420-1:** One clear coated bulb, base heat, glass sneeze guard and cutting board.

**DCSB400-3624-2:** Two clear coated bulbs, base heat, glass sneeze guard and cutting board.

Telescoping Clearance: **DCS400-1, -1CM:** (bottom of shade to counter) 16"-28".

**DCSB400-R24-1, -2420-1, -3624-2:** (bottom of shade to top of cutting board) 14"-26".

Heated Base Surface Area: **DCSB400-R24-1:** 24" diameter.

**DCSB400-2420-1:** 24"W x 20"D.

**DCSB400-3624-2:** 36"W x 24"D.

Cord Location: **DCS400-1:** Base of unit, server side center. **DCS400-1CM:** Under counter.

**DCSB400-R24-1, -2420-1, -3624-2:** Base of unit, server side on left.

ALL GLO-RAY® BLANKET HEATING ELEMENTS  
WARRANTED AGAINST BURNOUT FOR ONE YEAR.

### OPTIONS (available at time of purchase only)

Shade and post(s) in Plated Finish – Non-standard colors are non-returnable – Bright Nickel Standard –

<b>BNICKEL</b>	Bright Nickel
<b>BBRASS</b>	Bright Brass
<b>ABRONZE</b>	Antique Bronze

Base and Cutting Board (except DCS400-1, -1CM) in Swanstone® – Non-standard colors are non-returnable – Night Sky Standard –

<b>GGRAN</b>	Gray Granite
<b>BSAND</b>	Bermuda Sand
<b>NSKY</b>	Night Sky

Trim Ring (DCS400-1CM only) in Swanstone® – Non-standard colors are non-returnable – Night Sky Standard –

<b>GGRAN</b>	Gray Granite
<b>BSAND</b>	Bermuda Sand
<b>NSKY</b>	Night Sky

### COLORS AND FINISHES – PAGE 4

### ACCESSORIES (available for purchase at any time)

Cutting Board for the DCSB400-R24-1 in Swanstone® (unit comes standard with one cutting board) – Non-standard colors are non-returnable –

<b>CBR24GGRAN</b>	Gray Granite
<b>CBR24BSAND</b>	Bermuda Sand
<b>CBR24NSKY</b>	Night Sky

Cutting Board for the DCSB400-2420-1 in Swanstone® (unit comes standard with one cutting board) – Non-standard colors are non-returnable –

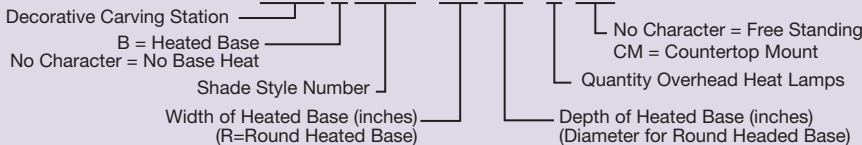
<b>CB2420GGRAN</b>	Gray Granite
<b>CB2420BSAND</b>	Bermuda Sand
<b>CB2420NSKY</b>	Night Sky

Cutting Board for the DCSB400-3624-2 in Swanstone® (unit comes standard with one cutting board) – Non-standard colors are non-returnable –

<b>CB3624GGRAN</b>	Gray Granite
<b>CB3624BSAND</b>	Bermuda Sand
<b>CB3624NSKY</b>	Night Sky

**RED-CTD-120** 120V, 250W Red Coated Bulb

### DCSBXXX-XXXX-XCM



## Glo-Ray® Carving Stations

An excellent addition to extend food holding times during serving periods is the Glo-Ray® Carving Station. Create a complete serving station for buffets by adding it to Hatco's Flav-R-Savor® Holding Cabinet.

- Overhead ceramic heating elements project high intensity radiant heat over entire target area
- Adjustable clearance of 17½" to 23½"
- Portable – includes a 6' cord and plug
- Shatter-resistant incandescent lights illuminate holding area
- Drip pan and cutting board available
- Available with or without base heat



**GRCSCL-24** with accessory left-hand sneeze guard, drip pan and cutting board



**GRCSLH-24** with accessory left-hand sneeze guard, drip pan and cutting board

### CARVING STATIONS

Model	No. of Bulbs	Dimensions W~ x D x H	Voltage		Watts	Ship Weight
			Single Phase Only			
<b>GRCSCL-24</b>	4	26" x 28" x 22½"-28½"	120		990	57 lbs.
<b>GRCSLH-24</b> †	4	26" x 28" x 22½"-28½"	120		1290	57 lbs.

~Width includes accessory left-hand sneeze guard.

#### All Carving Stations Feature:

Plug: NEMA 5-15P.

Models Shipped with: Right-hand sneeze guard.

Cord Location: Back side on base.

ALL CERAMIC AND BLANKET HEATING ELEMENTS WARRANTED AGAINST BURNOUT FOR ONE YEAR.

### OPTIONS (available at time of purchase only)

**HAL** Halogen Bulb in lieu of standard Display Light (60 Watt)

### ACCESSORIES (available for purchase at any time)

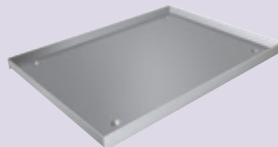
**CSCLB/PACC** Left-Hand Sneeze Guard Kit (3 lbs.)

**CSCL-PAN** Stainless Steel Custom Drip Pan 20" x 26¾" x 1" (9 lbs.)

**CSCL-BOARD** Approved Foodsafe Cutting Board 18" x 24" x 1¾" (19 lbs.)



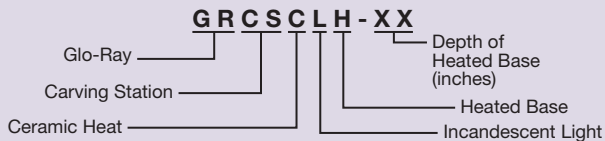
**CSCLB/PACC**



**CSCL-PAN**



**CSCL-BOARD**





DCSB400-R24-1 with optional Gray Granite base and standard Bright Nickel post and shade

## Plated Finishes and Stone Sample Colors

### PLATED FINISHES



Bright Brass



Bright Nickel



Antique Bronze

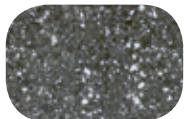
### HEATED STONE COLORS\*



Gray Granite



Bermuda Sand



Night Sky

*Colors are a representation and may not exactly match our colors. Consult factory for possible color matching options on these colors. Non-standard colors are non-returnable.*

To order a Hatco Paint Chip & Stone Sample Colors Sheet, visit [www.hatcocorp.com](http://www.hatcocorp.com) / Order Literature / Sales Literature / Sell Sheets.

\* Simulated Stone